



GAT MONTHLY MEMBERSHIP PROGRESS REPORT

Results as of: 8/31/2023

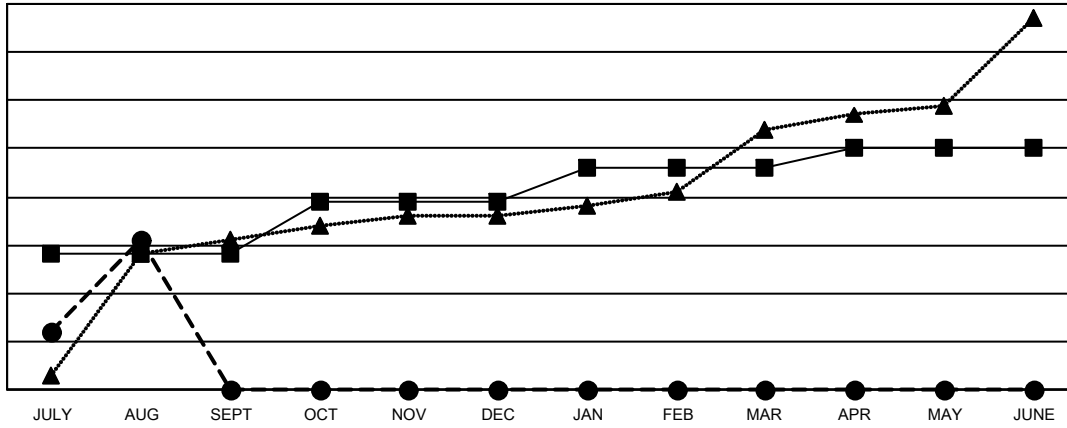
Multiple District 320

LOCATION: INDIA

Clubs			
RESULTS FOR 2023-2024			
QUARTER	NEW CLUB GOAL	NEW CLUBS	DROPPED CLUBS
JULY/AUG/SEPT	28	31	5
OCT/NOV/DEC	11	0	0
JAN/FEB/MAR	7	0	0
APR/MAY/JUNE	4	0	0

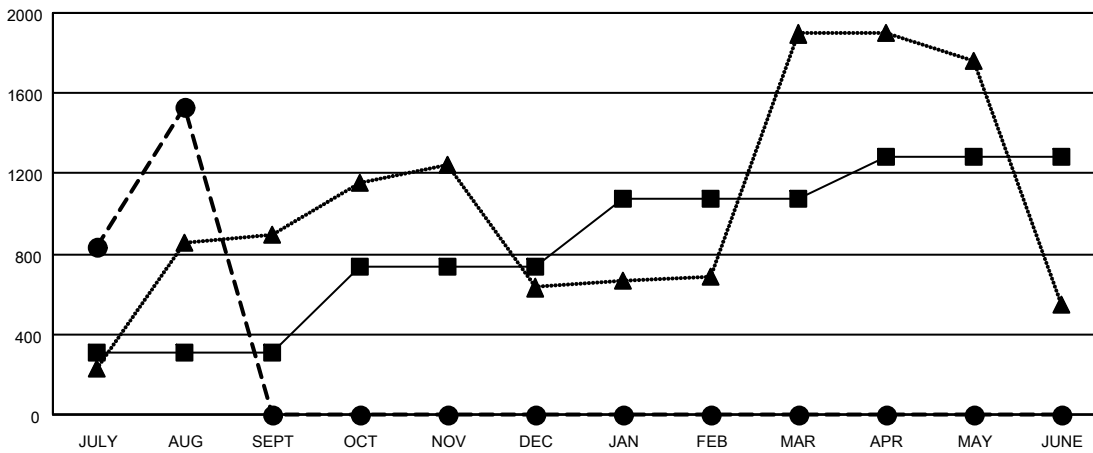
Members			
RESULTS FOR 2023-2024			
QUARTER	MEMBER GROWTH NET GOAL	MEMBER GROWTH ACTUAL	DROPPED MEMBERS ACTUAL (including transfers)
JULY/AUG/SEPT	305	2,390	691
OCT/NOV/DEC	430	0	0
JAN/FEB/MAR	340	0	0
APR/MAY/JUNE	210	0	0

GOALS AND ACTUAL NEW CLUBS CUMULATIVE



- CURRENT YEAR GOALS FOR NEW CLUBS
- CURRENT YEAR ACTUAL NEW CLUBS
- ▲- LAST YEAR ACTUAL NEW CLUBS

GOALS AND ACTUAL MEMBERS CUMULATIVE



- MEMBER GROWTH NET GOAL
- MEMBER GROWTH ACTUAL
- ▲- LAST YEAR MEMBERSHIP ACTUAL

DROPPED CLUBS: 5	
DROPPED MEMBERS	
DECEASED	5
CLUB CANCELLED	57
OTHER	629
TOTAL	691

306 CLUBS OF 655 ADDED 1 OR MORE NEW MEMBERS

[CLICK HERE FOR CUMULATIVE MEMBERSHIP DATA](#)

GENDER DISTRIBUTION	
MALE	16,956 (72.48%)
FEMALE	6,431 (27.49%)
NON BINARY	1 (0.00%)
PREFER NOT TO ANSWER	7 (0.03%)
TOTAL FAMILY UNIT MEMBERS	11,532
FAMILY MEMBERS PAYING HALF DUES	6,739